



China's Research of the Southern Ocean in past 10 years and future

Jiuxin Shi
Ocean University of China



CLIVAR SOP Meeting, Hague, July 2014

Jiuxin Shi, 史久新



- **Education**

- Physical Oceanography; 2000, Ph.D., IOCAS

- **Positions**

- 2006- Professor, OUC; 2002-2005, Research Associate, FIO SOA; 1992-2001 Research Assistant, IOCAS.
- 2009- Member of Standing Scientific Group – Physical Science, SCAR

- **Oceanographic Cruises**

- **Southern Ocean**: 2007/2008, 1994/1995, R/V *Xuelong*,
- **Arctic Ocean**: 2010, 2003, R/V *Xuelong*; 2008, *USCG Healy*; 2006, R/V *CCGS Louis S. St-Laurent*

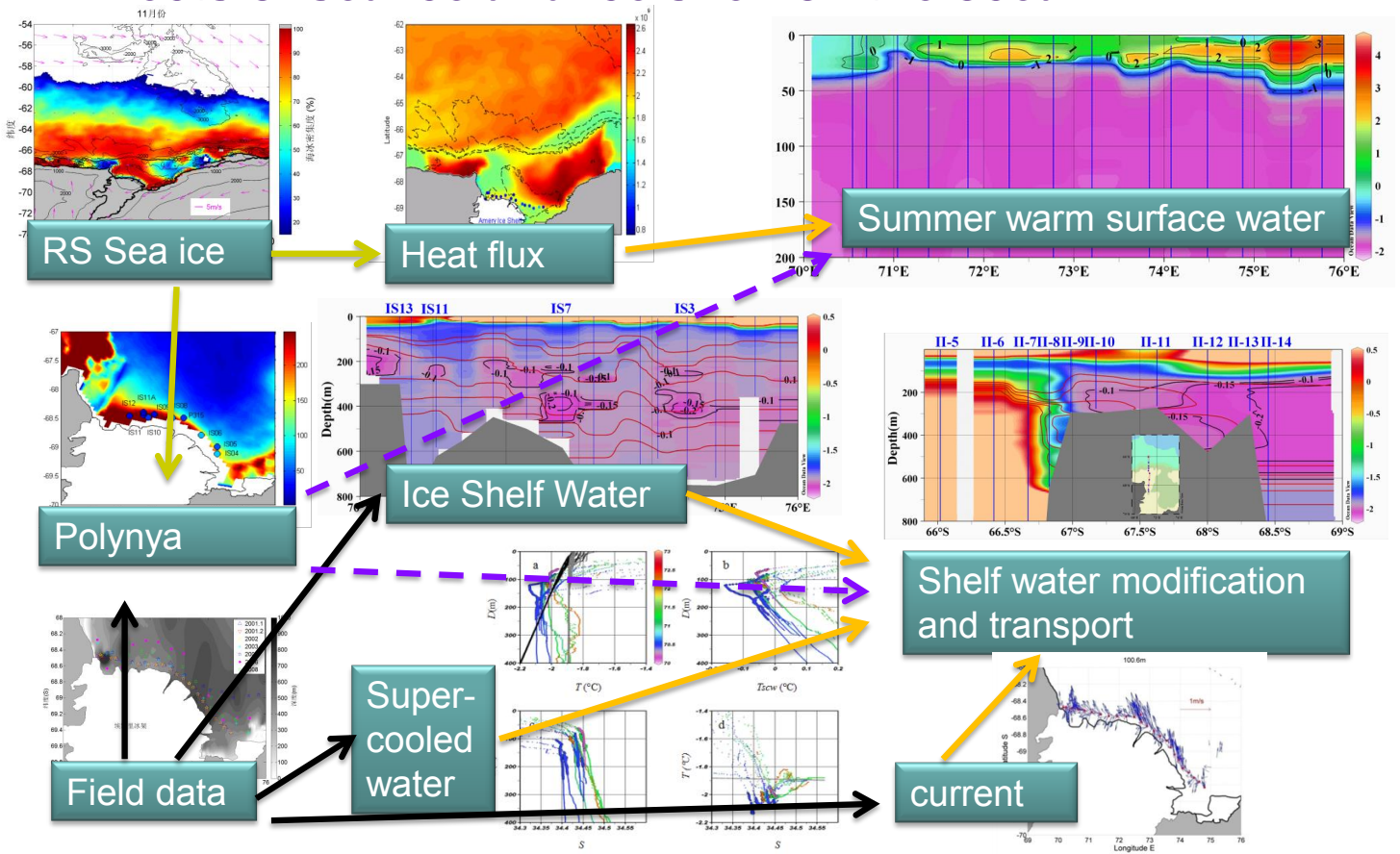


- **Research Interests**

- variations of watermasses and circulation in the polar oceans
- ice-ocean interaction: polynyas, outflow water from the cavity under ice shelves.

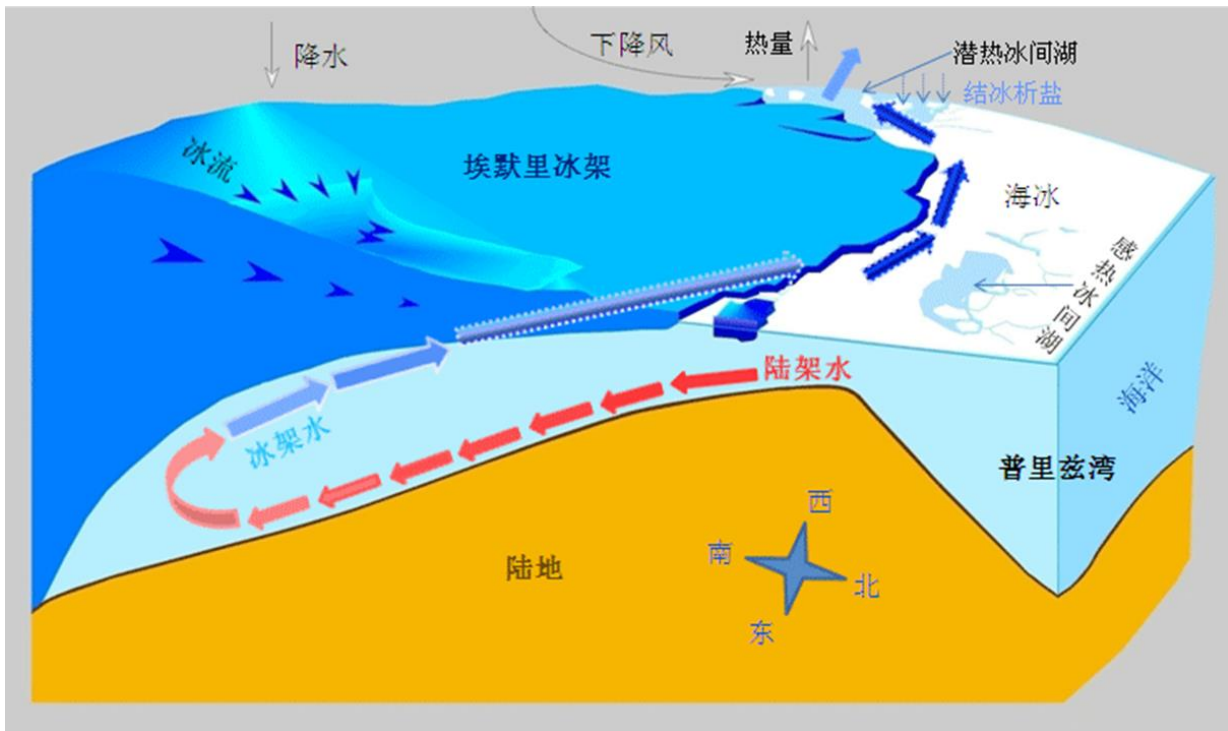
Recent research advances in Prydz Bay

Effects of sea ice and ice shelf on the ocean





Sea ice-polynya-ice shelf-ocean system in Prydz Bay





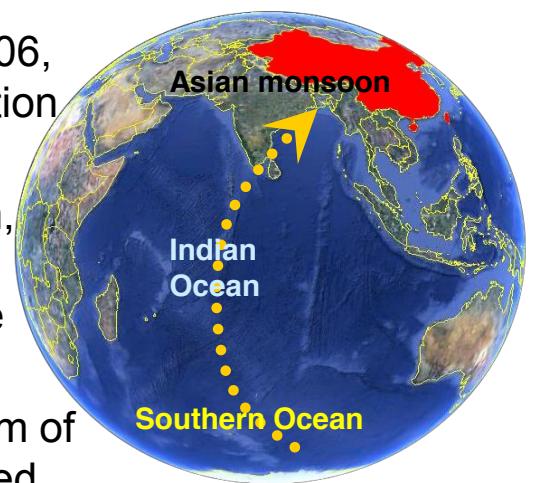
2004-2013

THE PAST 10 YEARS

research projects



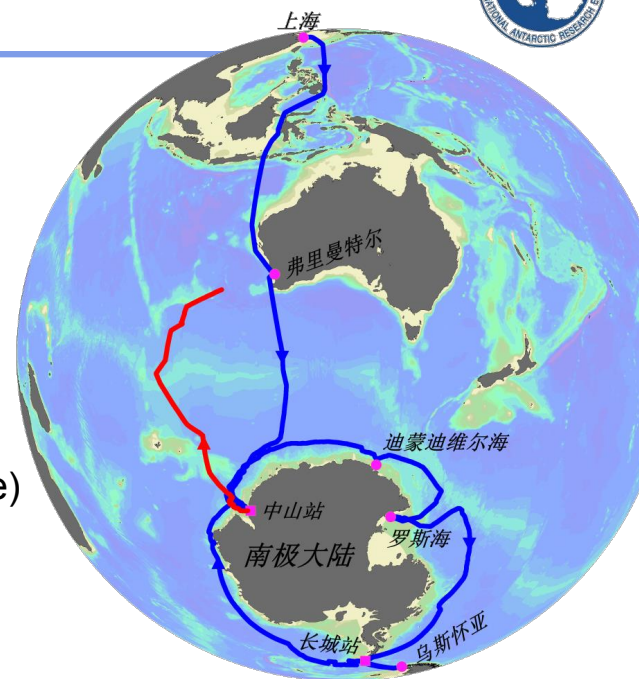
- Nature Science Fund of China, e.g. 2002-2006, Key project of NSFC, Water masses, circulation and ocean-ice shelf interaction in Prydz Bay
- 2007-2010, Key Technologies R&D Program, Technology development for assessing and predicting the environmental variations in the Antarctica.
- 2010-2014, National Basic Research Program of China(973 Program), Variations of the coupled ocean-atmosphere system in the Southern Ocean and Indian Ocean and their influences on the climate of China
- 2011-2015, The first Chinese national research plan for polar region: Chinese Polar Environment Comprehensive Investigation and Assessment Programmes (CPECIAP)



Cruises



- 1 ship to 1 station
 - Shanghai-Australia-Zhongshan(Prydz Bay, Indian Sector)
- 1 ship to 2 stations
 - Shanghai-Australia-Zhongshan(Prydz Bay)-Great Wall(South Shetland Islands, Drake Passage)
- Limited time for oceanographic station observations (~2 weeks in a half-year cruise)

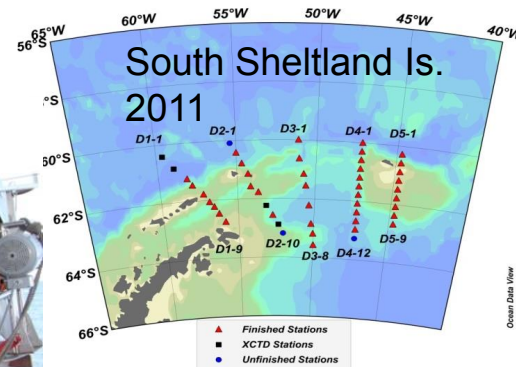
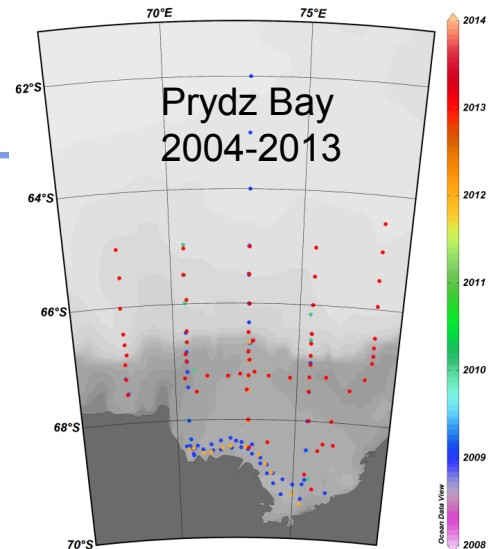


Cruise track of 30th CHINARE (2013/2014) with a cycle cruise around the Antarctica

Observations

- Oceanographic sections
 - CTD/LADCP, turbulence
 - Marine Chemistry, Biology, etc

- Underway observations for atmosphere, sea surface water and sea ice along the cruise tracks

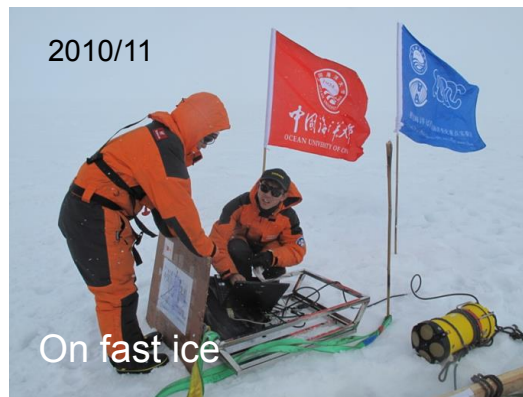




Process experiments in Prydz Bay



Polynya process:
Launch XCTDs into a polynya in front of Amery Ice Shelf



Fast ice-ocean interaction:
measure profiles of T/S and currents in the ocean under fast ice, radiations, meteorology .

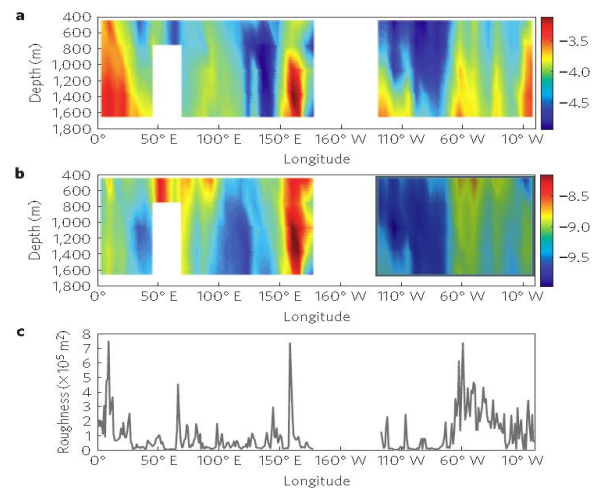
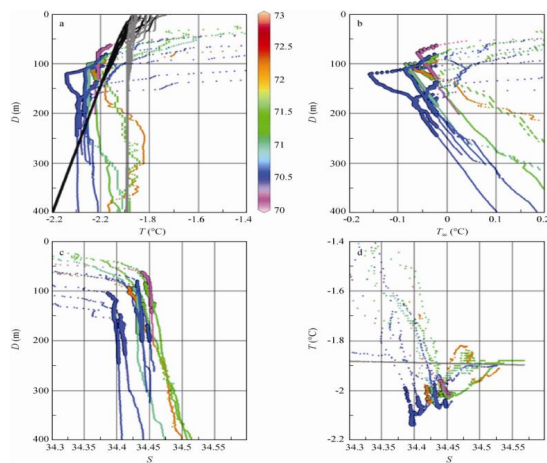
Exchanges between shelf and basin: deploy moorings in the entrance of the bay.

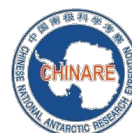




Research highlights

- Water mass and its variations in the region of Prydz Bay (AABW in basin, Sun et al., 2014)
- Outflow water from cavity under Amery Ice Shelf (Zheng et al., 2011; Shi et al., 2011)
- Diapycnal mixing in the Southern detected by high-resolution hydrographic profiles from Argo floats (Wu et al., 2011)





2016-2020

NEXT 5 YEARS

Research projects



- CPECIAP is hopeful to be extended to the second stage during 2016-2020, but has no any plan in details until now.
- A project for young scientists of the National Basic Research Program of China(973 Program) has been approved: Variability of the MOC in the ACC region and its impact on global climate change.
- Possible NSFC projects: ice shelf – ocean modeling, hot-water drilling on Amery Ice Shelf, etc
-

Observations

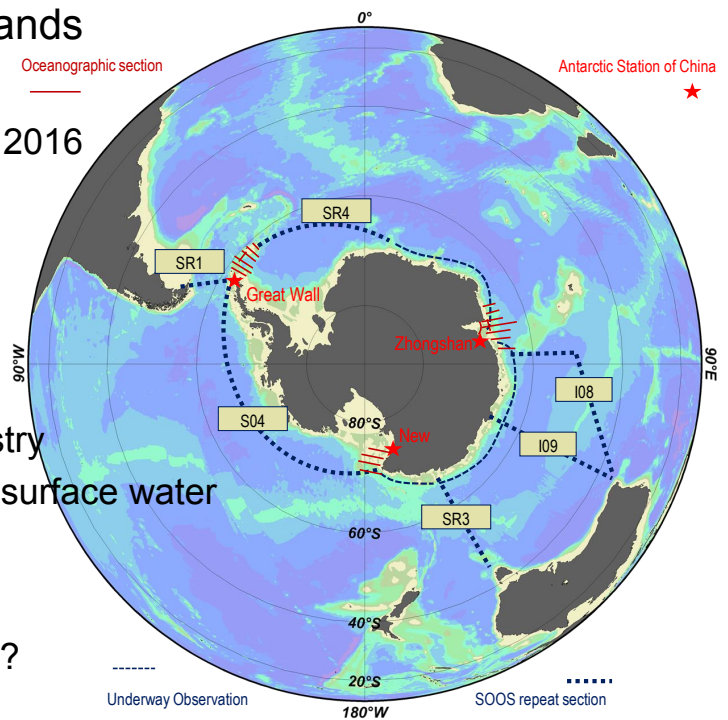


- Oceanographic stations and sections

- Prydz Bay, South Shetland Islands
- ACC regions?
 - If new icebreaker available since 2016
- Ross Sea?
 - If the 5th Chinese Station is built

- Underway observations

- full cruise
 - meteorology, atmosphere chemistry
 - ADCP, T/S and chemistry of sea surface water
- Expendable probes sections
 - XBT/XCTD, radiosonde
 - ~115° E, Drake Passage, others?
- sea ice





Thanks!